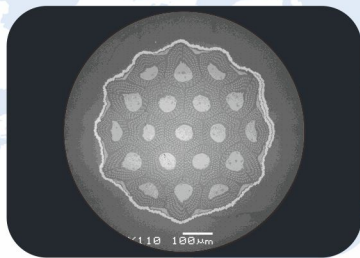
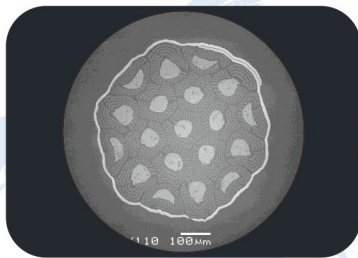


Nb₃Sn (Internal Tin) SUPERCONDUCTING WIRE

Number of filaments	Filament Diameter (μm)	Nominal Cu/ non-Cu	Nominal Diameter(mm)		Critical Current (Amps @4.2K)	n value (12T,4.2K)	Hysteresis loss (mJ/cm ³ @ 4.2K, ± 3T)	Insulation	RRR (273K/20K)
			Bare	Insulated	12T				
1	2888	1.0	0.818	0.970	>210	>20	<350	S-glass	>150
2	2964		0.818	0.970	>240		<350		
3	3040		0.818	0.970	>220		<600		
4	3040		1.000	1.300	>360		<620		
5	3040		1.500	1.800	>810		<620		
6	5920		0.818	0.970	>260		<620		



- ① IT Nb₃Sn
- ② IT Nb₃Sn
- ③ ④ ⑤ IT Nb₃Sn
- ⑥ IT Nb₃Sn

01|02|
03-05|06

